



# LEAVERITE NEWS

Grand Junction Gem and Mineral Club  
 2328 Monument Road  
 Grand Junction, CO 81507



2016			October			Volume 33 Number 7
Sunday	Monday	Tuesday	Wednesday	Thursday	Friday	Saturday
						<b>1</b> 9-12 <b>Club Open Shop</b> <b>Yard Sale</b> 12-3 <b>Sale</b> Filigree 1-4 Wire Wrapping 
<b>2</b>	<b>3</b>	<b>4</b> 6-9 Advanced Lapidary	<b>5</b> 12-3 Open Shop	<b>6</b>	<b>7</b>	<b>8</b> Open Shop 12-3 Wire Wrapping
<b>9</b>	 <b>10</b>	<b>11</b> 6-9 Advanced Lapidary	<b>12</b> 12-3 Open Shop <b>Board Meeting</b>	<b>13</b> <b>Cookie Night</b> <b>7:00</b> <b>Program</b> <b>Thomas Hunn</b>	<b>14</b>	<b>15</b> <b>Field Trip</b> <b>Bookcliffs</b> Open Shop 12-3 Filigree 1-4 Wire Wrapping
<b>Earth Science Week</b>						
 <i>Full Moon</i> <b>16</b>	<b>17</b>	<b>18</b> 6-9 Advanced Lapidary	<b>19</b> 12-3 Open Shop	<b>20</b>	<b>21</b>	<b>22</b> 9-12 Open Shop 9:30 Facetors 12-3 Filigree 1-4 Wire Wrapping
<b>23</b>	<b>24</b>	<b>25</b> 6-9 Advanced Lapidary	<b>26</b>	<b>27</b> <b>Pot Luck</b> <b>6:30</b>	<b>28</b> <b>Mineral Group</b> <b>6:30</b>	<b>29</b> 9-12 Open Shop 12-3 Filigree 1-4 Wire Wrapping
<b>30</b>	 <b>31</b>					

C

L

U

B

N

E

W

S

The Grand Junction Gem and Mineral Club is inviting everyone to our rock auction! Come and view collectible Mineral Specimens, Petrified Wood, Rare Minerals, and Lapidary Supplies from 10:00 AM until Noon. There will be some "Buy It Now" rock items priced for those impatient rock hounds. The Yard Sale is from 8- 5.

Those donating items for the yard sale can bring them to the clubhouse on meeting nights and leave them on the tables on the east side of the kitchen area, or Friday, September 30<sup>th</sup> we will be at the clubhouse from 1:00 until 5:00 PM. Please bring items that someone will want to buy! 100% proceeds go to the club and pricing will be done by Judy Mason.

Items for the 60-40% Rock Auction, please wait until the regular Thursday meeting night, September 22<sup>nd</sup>, Friday afternoon before the auction, or Saturday morning of the auction, to catalog your items.



# ROCK AUCTION and YARD SALE!!!

Saturday, October 1st  
The Grand Junction Gem and Mineral Club  
2328 Monument Road

**Yard Sale Starts At 9:00 AM and Ends At 5:00 PM**

**Come And See The Rocks, Minerals, And Lapidary Items Until Noon And Get A Bidding Number**

**Some Items Will Have A "Buy It Now" Price On Them During The Morning For Impatient Buyers**

**The Rock Auction Will Begin At Noon**

**The Public Is Invited!!!**



### Field Trips

Mike and Jana Burritt will be leading a field trip on October 8<sup>th</sup>. The trip will be to the Bookcliffs looking for calcites and barites. This is always a great trip. Mark your calendar and plan to join them. Be sure you have your trip liability form signed and on file with the club. Check with Mike and Jan for time and place and equipment.

### Mineral Group

Mineral group meets each Friday following the Thursday Club's Pot Luck Meeting at the Bersch's house for a pot luck dinner, 248 Little Park Road, at 6:30, followed by an evening of using a microscope connected to a large screen TV to examine the details of various rocks and minerals. We will supply the coffee, tea and eating utensils. All members welcome. Questions call 242-3134.

### Facetors Group

At the September 24<sup>th</sup> meeting the project was the Tom Schlegel Rectangle. We made a group order for cutting material and other supplies. All members are welcome to attend the Facetors Group each month or to request to take a one-on-one class from one of the faceter teachers.

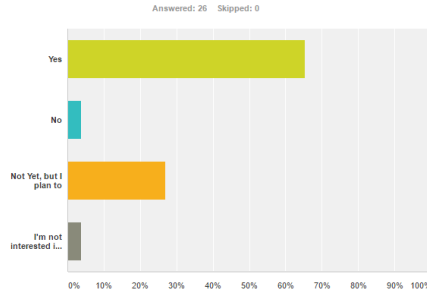


We are getting great results

from the survey of classes offered by the Gem and Mineral Club

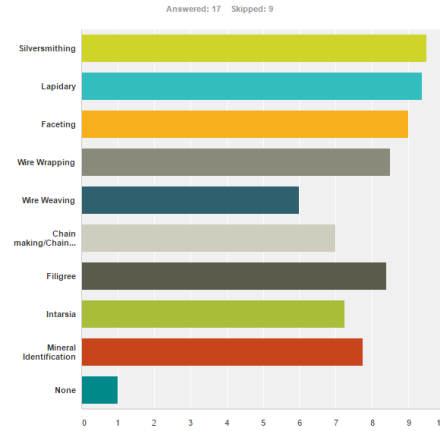
Go to the website to see the results of the surveys. So far, these are some of the results out of about 24.

Have you taken any classes at the Club?



If you have not taken it, you can complete a survey at the meetings or go to: <https://www.surveymonkey.com/r/QQJN8C3> or complete a survey at a meeting.

What classes have you taken?



**The following classes are being planned:**

- Wayne McMacken Silversmith Day class
- JoAnn Piburn Silversmith Night class
- Jim Schultz Lapidary Day class
- Mike Burritt Lapidary Night class
- JoAnn Piburn Advanced Silversmith
- Cindy Teare Chain Making/Chain Maille end of September

**The following are on the calendar:**

- Thom Erickson Advanced Lapidary Tuesday 6:00 to 9:00 PM.
- Terri Drost's Wire Wrap Saturday, 1:00 to 4:00 PM
- Jana Burritt Filigree Saturday, 12 – 3 PM

**October Shows in the Region**

Days	Show	City	State	Email
7-9	Moab Points and Pebbles Club	Moab	UT	<a href="mailto:moabrockclub@live.com">moabrockclub@live.com</a>
8-9	Nevada County Gem & Mineral Society	Grass Valley	CA	<a href="mailto:webmaste@ncgms.org">webmaste@ncgms.org</a>
8-9	Huachuca Mineral and Gem Club	Sierra Vista	AZ	<a href="mailto:gmbailey@msn.com">gmbailey@msn.com</a>
14-16	Pahrump Valley Rock Hounds	Pahrump	NV	<a href="mailto:info@pahrumpROCKS.com">info@pahrumpROCKS.com</a>
21-23	Rockhounds Outreach for Community Knowledge (R.O.C.K.),	West Jordan	UT	<a href="mailto:utahninnj@aol.com">utahninnj@aol.com</a>



*Brag Rocks*

And Custom Jewelry





## Earth Science Week

The Museum of Western Colorado invites you to help us celebrate National Fossil Day 2016 on Wednesday, October 12th at Dinosaur Journey in Fruita. The National Park Service and the American Geosciences Institute will co-host National Fossil Day during Earth Science Week. The Museum is participating in this event to help promote public awareness of our fossil resources, as well as their scientific and educational value.

To learn more, please visit <http://nature.nps.gov/geology/nationalfossilday/>

Hosting these events will be, among others, Rebecca Hunt-Foster (MWC Paleo Collections Manager), John Foster (MWC Curator of Paleo), MCNCA staff, and Harley Armstrong (BLM Regional Paleontologist). Members from our very own Gem and Mineral Club will be presenting along with members of the John McConnell Math & Science Center of Western Colorado. Pictured below was the practice session at the Cookie Meeting where they were presenting "The Walk Through Time" with students Ali and John from the Center. Students can earn badges for working with mentors and participating in these events.



## October Gemstones

The name opal derives from the Greek Opallos, meaning "to see a change of color." Opals range in color from milky white to

black with flashes of yellow, orange, green, red, and blue. An opal's beauty is the product of contrast between its color play and its background. Opal is a formation of non-crystalline silica gel that seeped into crevices in the sedimentary strata. Through time and nature's heating and molding processes, the gel hardened into the form of

opals. The opal is composed of particles closely packed in spherical arrangements. When packed together in a regular pattern, a three-dimensional array of spaces is created that give opal its radiance.

October also has two birthstones; **Tourmaline** and **Opal**. **Tourmaline** is a favorite gemstone for many because it's available in a rainbow of beautiful colors.

**Opal** gemstones are truly unique because each individual gem is adorned with a one-of-a-kind color combination.



## Cookie Meeting Program

Thomas Hunn, of Thomas Hunn Jewelry, 112 North 3rd St. will be giving a talk about diamonds and gemstones. This should be a very interesting and professional program.

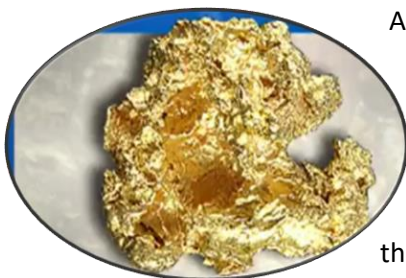
## In the News

### There's gold in 'dem der hills!

*By Daniel Uria*

*September 8, 2016*

*Jamestown, California*



A prospector in central California found a gold nugget the size of a T-bone steak, reports CBS affiliate KPIX in San Francisco. Now local businesses in the little town of Jamestown, California about 60 east of Stockton, are banking on a modern gold rush. It was Tuesday afternoon when the owner of the Jamestown Hotel got word his friend had struck gold. Charlie Morgan expecting to see a nugget but when he first saw how big it was, "I thought

that's a lucky guy!" The lucky friend was Oscar Espinoza of Modesto. Espinoza told

the folks at Gold Prospecting Adventures he'd been searching in nearby Woodscreek. But

he didn't say where exactly. The nugget weighs about 18 ounces. Morgan believes he could get \$70,000 for it. Owner Bryant Shock calls it a rare find that he says will spark collectors' interest, and that could drive up the price up four or five times higher. "It's more valuable this way because it's a piece of history and his meltdown is just another piece of gold," says Shock. Espinoza is keeping a low profile but has asked Morgan to keep it in a safe until he finds a buyer. "He felt more secure with it being put away," said Morgan. "The safe isn't actually here, so nobody knows where it is."

## Grand Junction Gem and Mineral Club

### Officers

President	Mel Bersch	242-3134
Vice President	Mike Burritt	260-3897
Co-Secretary	Carla Martin	523-2148
Co-Secretary	Kay Crawford	253-414-7297
Treasurer	Pam Bersch	242-3134

### Directors

Thom Ericson	623-2522
Pat Martinez	434-9270
Cindy Teare	462-6806
Jim Schultz	242-0428
Betty Jo (BJ) Brown	241-3051

### Committee Chairpersons

Audit	Kathy Erickson	623-2522
Building/Ground	Sylvester Spaeth	846-5716
	Judy Nason	250-9128
Compliance	Jim Schultz	242-0428
Correspondence	Bambi Harmon	245-1414
Decorating	Linda Dunham	620-255-2856
Display Cases	Val Meduros	773-4244
	Carmen Bruno	773-4247
Education	Cindy Teare	462-6806
Field Trips	Wayne Sims	314-2970
Funding/Constr.	Mike Cosby	589-0687
Historian	Virdie Savage	243-1030
	Connie Lynch	361-2123

Leaverite Editor
Librarian
Meet-Up
Membership/Badges
Nominating
Publicity
Scholarships
Shop Foreman
Show
Show Assistant
Supplies
Vests
Website

Lorrie Wallace	250-1122
JoAnn Whalen	424-2007
Evita Schultz	242-0428
Jim Schultz	242-0428
Dave McCollough	523-5443
Missy Palmer	639-2615
Teri Drost	256-0983
Wayne McMacken	208-2534
Bill Hood	241-8020
Thom Ericson	623-2522
Scott Pugsley	972-953-7735
Chuck Duncan	270-8068
Wayne McMacken	208-2534
Linda Sims	314-2970
Linda Sims	314-2970
John Mayerik	243-8589

### Duties of General Membership

- Pot Luck: Bring a dish to share with several members
- Cookie Meeting: Bring 3 dozen cookies for meeting
- Cleaning: Clean before each Pot Luck Meeting
- Hospitality: Be early, greet and give out prize tickets.
- Show: Set up, take down and work during.

### Sign Up for A Duty



Safety-----All members at all times.

### Club Information

The Grand Junction Gem & Mineral Club, Inc. is affiliated with the American Federation of Mineralogical Societies, and the Rocky Mountain Federation of Mineralogical Societies. The club is located at 2328 Monument Road Grand Junction, CO. The Club is a nonprofit, 501(c)(3) tax-exempt, educational organization. Our purpose shall be exclusively educational and social: To increase and disseminate knowledge of the earth sciences pertaining to minerals, gems, rocks, artifacts, fossils and similar subjects; To promote and perpetuate knowledge of the lapidary arts; To encourage field trips; To encourage greater public interest and education in gems, fossils and minerals, cooperating with established institutions in such matters. The Grand Junction Gem and Mineral Club meets on the second and fourth Thursday of each month at 6:30 pm in our club building. June, July, and August meetings will be on the fourth Thursday only. November and December meetings will be on the second Thursday only. Our Annual Show is Mother's Day Weekend and is held at Two Rivers Convention Center at 159 Main St, Grand Junction, CO 81501. Classes and workshops are offered throughout the year and are announced in the newsletter.

### The Mineral Group

The Mineral Group meets at the Bersch's, 248 Little Park Rd, on the Friday after the 4<sup>th</sup> Thursday's Club Meeting and is open to all club members and guests. A potluck will be followed by discussion and microscopic images of various minerals. Please bring up to 5 specimens, and/or other minerals you wish to look at for the discussion.



## New Members

Welcome to the Grand Junction Gem and Mineral Club. Include your email address when you register to receive newsletters and updates. Check out the website for past newsletters and general information. Order a vest made to your size from Connie Lynch for \$20.00 and a name Tag from Dave McCullough for \$8.00. Be sure to sign up for some classes to learn how to use the machines in our shop so you can participate in open shop.

## Dues

Our calendar year is January 1 - December 31. Dues are due by December 31 but must be in by January 30 for names to be included in the Club Directory. Please pay your dues at the meeting or send to : Dave McCollough 3032 Milburn Court Grand Junction, CO 81504; 970-523-5443. Prospective members should attend one general meeting to obtain a membership application. Annual dues will be prorated after July 1st. Adult Member - \$30.00 (18 and over) 2nd Adult, same household - \$10.00 Children under 18 years, same household - No Cost

## Club Rules and Regulations

The notebook of rules and regulations is available on the front table at all meetings for members to read.

## Gem and Mineral Classes

Most classes are 6 weeks. Member's cost \$30.00. Non-member's cost is \$60.00. The cost of the classes is based on 6 weeks and prorated when the class is shorter. Please contact instructors to sign up for classes.

Class	Instructor	Phone	Open Shop
Beading	Tiny Blasdal	858-7975	<b>Shop Chairman :</b> Thom Erickson 623-2522
Chain Making	Cindy Teare	462-6806	<b>Shop Supervisors:</b>
Faceting	Connie Duncan	244-2984	Wednesday: 12-3 Thom Erickson 623-2522
Filigree	Jana Burritt	260-9471	Saturday: 9-12 Scott Pugsley 972-953-7735
Intarsia	Jim Lynch	361-2123	Previous instruction in use of equipment is required
Lapidary	Jim Schultz	242-0428	before using any tools or machines in the shop.
Lapidary	Mike Burritt	260-3897	Sign in each time you use the shop.
Silversmith	JoAnn Piburn	245-1669	Help with the clean-up before leaving.
Silversmith	Wayne McMacken	208-2534	Shop fee is \$5.00/session.
Wire Weaving	JoAnn Piburn	245-1669	Slab saw \$.26 per square inch.
Wire Wrap	Teri Drost	256-0983	<b>Always—Safety First</b>

## The Leaverite News

The Leaverite News is your newsletter. Articles, ideas and news should come from the club members. If you are an officer, director, or committee chair person you should plan to submit monthly updates by the 15th of each month. News should be emailed to [leaveriteneews@gmail.com](mailto:leaveriteneews@gmail.com) or contact Lorrie Wallace (250-1122) or JoAnn Whalen (424-2007), 554 Casa Rio Ct., Grand Junction, CO, 81507. *Leaverite News is published nine months of the year (Sept-May) by the Grand Junction Gem and Mineral Club, Inc. Articles printed in this newsletter are the experiences and/or opinions of the individuals submitting them. They do not necessarily reflect the views or opinions of the Grand Junction Gem and Mineral Club, nor of the editors. Articles written without a byline are written by the editor. We are not responsible for authenticity, safety, or reliability of publications. All articles/photos are included in accordance to fair use for research and education. Caution and safety should always be practiced when trying out any new idea, venture or exploration in the field. We request corrections and/or additions to articles.*

## Grand Junction Gem and Mineral Website

Our website, [www.grandjunctionrockclub.org](http://www.grandjunctionrockclub.org), has meeting information, Leaverite Newsletter, Classes, Field Trips, & Photo Gallery. Send information to John Mayerik; 243-8589; email [Grandjunctionrockclub@gmail.com](mailto:Grandjunctionrockclub@gmail.com)

## Meetup

Meetups are neighbors getting together to learn something, do something, share something. The Club is registered at the Grand Junction Meetup. Go to [http://www.meetup.com/cities/us/co/grand\\_junction/](http://www.meetup.com/cities/us/co/grand_junction/) to register or for information or call Jim Schultz at 242-0428.

## Summary of Minutes of the Gem and Mineral Club Board Meetings

### Business Meeting September 7, 2016

#### Old Business:

- Saturday, October 15, 2016 the Math and Science Center will be open to the public
- The shop is finished, carpeted, thanks to Jim and Mel. Made belt protectors, sold items not needed.
- Meeting room chairs that were damaged or broken were discarded. We need more chairs.
- Emergency lights were purchased. 3 safety lights for meeting rooms and one for the shop.
- cards for club members at a cost of about \$10 to 500.

### Cookie Meeting September 8, 2016

- Guests were introduced. Ali and John were here with their mother, Jackie, to present during the program.
- Bobbie Horten, a previous member, has rejoined the club.
- Bambi has the flu—get well soon.
- Verdie Savage will be moving into Mesa View in the next week or so.
- The groundbreaking ceremony at the site of our new John McConnell Math and Science Center, 7th and Kennedy, was September 6 at 4:00pm. Check their

#### Old Business:

- Work in shop complete, 4 chairs on order, carpet complete, doors sealed, door jam rebuilt, new hoods for saws. Thanks for all the help!
- Classes—sign-up sheets available on table. We need new pieces for the display case.

#### New Business:

- Field trip this Saturday. The next field trip will be to the Bookcliffs. Mike and Jana will lead it.
- Rock Auction and Yard Sale were discussed and flyers made. There will be a bike race that weekend so we should have a lot of traffic going by.
- A power outage a couple weeks ago alerted us to the need for new safety lights.
- We are looking into a sign with the club name for above the main door.
- Mike has sheet metal for making road signs for yard sales, etc.
- If you see any chairs for meeting room for about \$10 let us know.
- Business cards will be made for club members
- Show and tell: bob, Ali, John, Mike and Mel

<https://www.facebook.com/John-McConnell-Math-and-Science-Center-167755563250491/>





Continued . . .

### **The John McConnell Math & Science Center of Western Colorado**

The John McConnell Math & Science Center of Western Colorado needs a new home. Colorado Mesa University needs a new building to house its nascent engineering program.

The two organizations decided to marry their fortunes in a unique collaboration that benefits both parties and, more importantly, young minds waiting to be inspired by a more robust science, technology, engineering and math environment.

In the “sausage-making” world of capital construction projects, the collaboration enhanced CMU’s chances of getting \$23 million in state funds for the building.

The Math & Science Center was already committed to raising \$7 million for a new home. By committing that fundraising effort to CMU’s building and establishing a partnership that integrates the college’s mission with K-12 programming and a local educational nonprofit organization, the project has inched its way up the list of priorities for a limited amount of capital construction money.

There’s no shortage of upsides to having the Math & Science Center on campus. Not only will this contribute to CMU’s mission to serve the university’s 14-county area by bringing more math and science concepts to K-12 students, but it provides CMU engineering students opportunities to volunteer and mentor and gives future K-12 teachers an opportunity to receive hands-on experience.

CMU plans to set aside nearly 20,000 feet of space in the new building to house the Math & Science Center, which has outgrown its cramped quarters in old elementary school on Orchard Mesa.

A new location, along with access to some university resources, should help the Math & Science Center improve its reach. Currently the center serves about 800 students through summer camps, 5,000 students on school field trips from across the Western Slope, 3,000 students for drop-in visits and thousands of kids in school after-care programs and outreach programs across the region. The center also offers Family Science Nights, Saturday Science hours and birthday parties.

A campus location could mean using dorms in the summer for weeklong science camps that could attract students from throughout the region.

As school districts outside Mesa County bring students on field trips to the center, the university benefits by establishing a comfort level with potential future students. It gives the university an opportunity to tout its relationship with CU-Boulder to provide an engineering curriculum.

CMU President Tim Foster and John Hopkins, chairman of the Math & Science Center board of directors, said the collaboration complements each entity’s goals.

It also creates more excitement about STEM opportunities, which we’ve identified as an important component to this community’s economic turnaround.

Foster said partnerships — whether with the city of Grand Junction or the University of Colorado at Boulder — have been paramount to the university’s growth. This is just the latest example of creating win-win scenarios that deliver considerable benefits to the community at large.

## LARGE TYRANNOSAURUS REX SKULL FOUND IN MONTANA

Kids Version of this Article

ONE OF 15 IN THE WORLD

By Mary Beth Griggs August 22, 2016

Everyone has a big head when they're 15. But in the case of this Tyrannosaurus rex, having a big head takes on new meaning. The recently-discovered skull of the teenage Tyrannosaurus rex was 4 feet long when it died, around 66 million years ago.

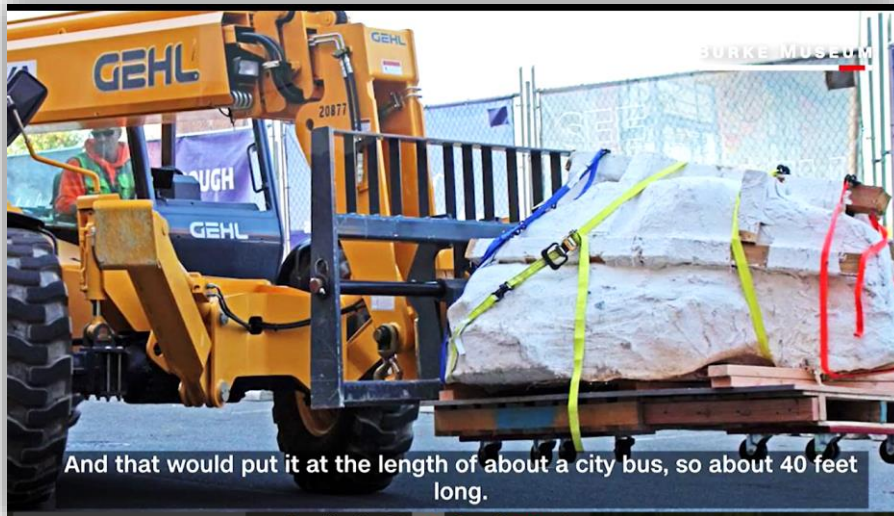
The dinosaur was discovered on a University of Washington dig in Montana. The fossil is nicknamed the "Tufts-Love" Tyrannosaurus rex after the two volunteers who found the fossil, Jason Love and Luke Tufts. They were volunteering on the project, which is excavating the fossil-rich Hell Creek Formation. It is one of the largest and most complete T. rex specimens found to date, and the skull is one of only 15 T. rex skulls in the world in this kind of good condition.

"Having seen the 'Tufts-Love Rex' during its excavation I can attest to the fact that it is definitely one of the most significant specimens yet found, and because of its size, is sure to yield important information about the growth and possible eating habits of these magnificent animals," Jack Horner, a research associate at the Burke Museum said.

The Burke Museum is affiliated with the University of Washington, and will be moving to a newly constructed facility in 2019. The Tufts-Love T. rex will be on display there in 2019, but you don't have to wait that long to see it. The plaster-wrapped skull is currently on display until October 2 at the Burke Museum, at which point researchers will begin the delicate process of removing the skull from its protective wrappings.

The researchers also found other fragments of the dinosaur including ribs, parts of the jaw, pelvis, and vertebrae. More excavations of the dinosaur are planned for next year.





And that would put it at the length of about a city bus, so about 40 feet long.



The four-foot-long skull is of one of the most intact T. rex specimens ever discovered



A 66.3-million-year-old Tyrannosaurus rex was discovered in northern Montana



More Rocks and Jewelry!





















